



Total Solution Provider in Saw Device

SA06719AD

67.5MHz IF SAW Filter
19.20MHz Bandwidth
Revision 0: 6. August. 2009



- Electrical Characteristics
 - Package Dimensions
 - Testing Environment
 - Frequency Characteristics
-

SAWNICS Inc.

460 Cheonheung-ri, Seonggeo-eup, Cheonan-si, Chungcheongnam-do, 330-836 / Korea.
Tel: +82 41 550 9372 / Fax: +82 41 550 9399 / www.sawnics.com

□ Electrical Characteristics

Maximum Ratings

Parameters Description	Unit	Minimum	Typical	Maximum
Operation Temperature Range	°C	-20	-	70
Storage Temperature Range	°C	-40	-	85
Maximum DC Voltage	V	-	-	10
Maximum Input Power	dBm	-	-	10
Source Impedance (single ended) ⁽¹⁾	Ω	-	50	-
Load Impedance (single ended) ⁽¹⁾	Ω	-	50	-
Package type & size	D			
Length x Width	mm ²	-	20.0 x 12.6	-
Height	mm	-	-	5.05

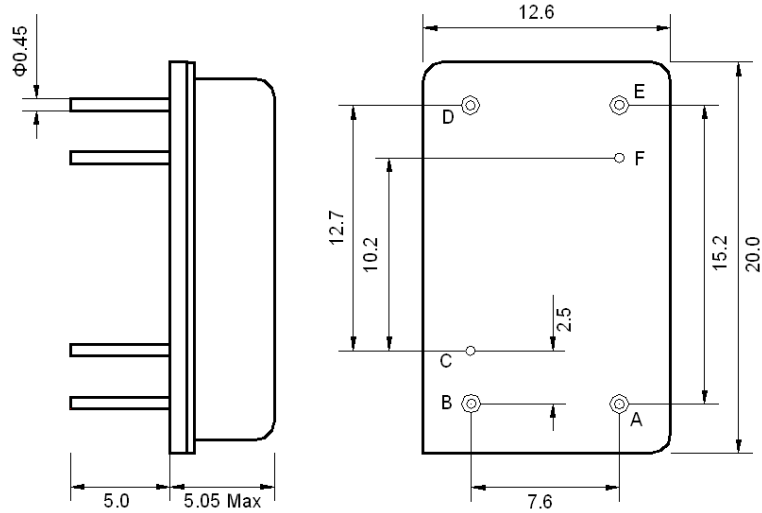
Electrical Specification

Parameters Description	Unit	Minimum	Typical	Maximum
Center Frequency (Fo)	MHz	67.42	67.50	67.58
Insertion Loss at Fo	dB	-	23.50	25.00
Amplitude Ripple Variation	dB _{p-p}	-	0.55	1.0
Group Delay Variation	nsec	-	30	50
Absolute Delay at Fo	μsec	-	2.25	-
Bandwidth at -1.0 dB	MHz	-	19.20	-
Bandwidth at -3.0 dB	MHz	19.30	19.50	-
Bandwidth at -40.0 dB	MHz	-	20.80	21.00
Relative Attenuation				
Lower Sidelobe	dB	50	55	-
Upper Sidelobe	dB	50	55	-
Temperature Coefficient	ppm/°C	-	-72	-

Notes : (1) With Matching Network (Ref. Testing Environment Circuit as shown below).

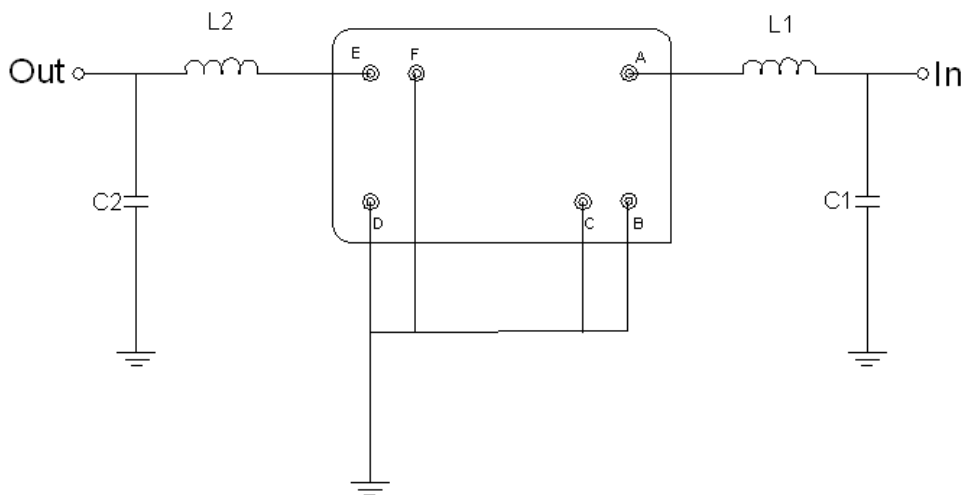
Those impedances could be modified with different impedance values and/or structures, if necessary.

Package Dimensions



Pin Description	
B, C, D, F	Ground
A	Input
E	Output

Testing Environment



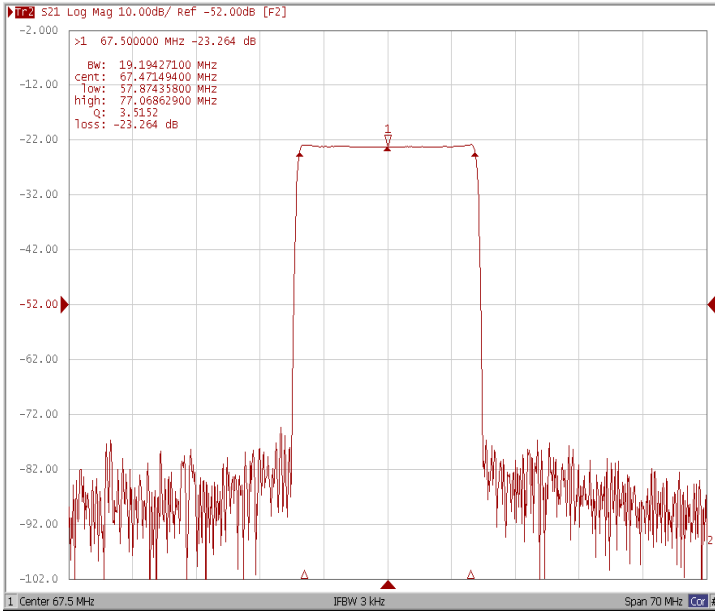
Test Fixture & Values	
Input	L1= 220 nH, C1=12 pF
Output	L2= 180 nH, C2=16 pF
Source/Load Impedance	50 Ω



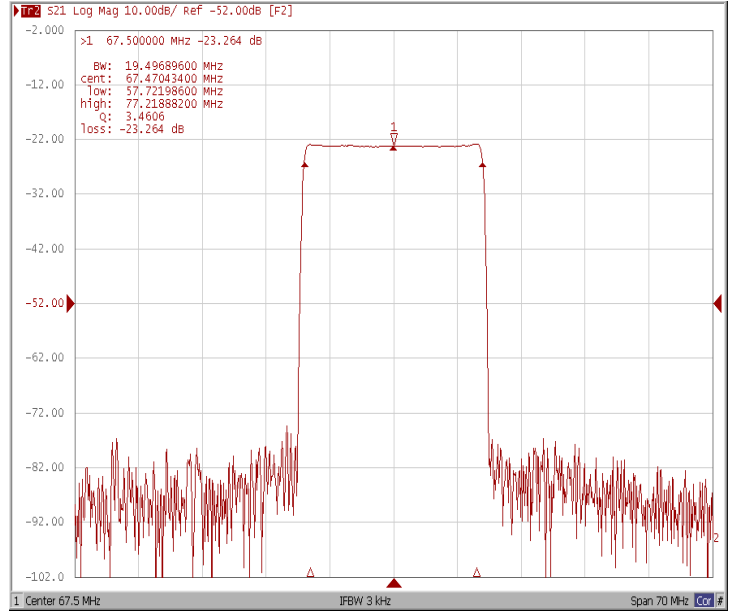
Frequency Characteristics

Frequency Response

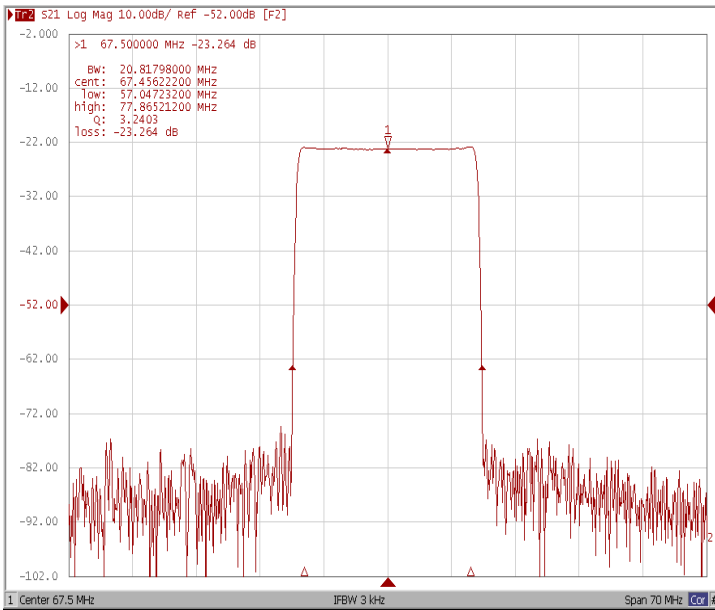
Bandwidth at -1.0 dB



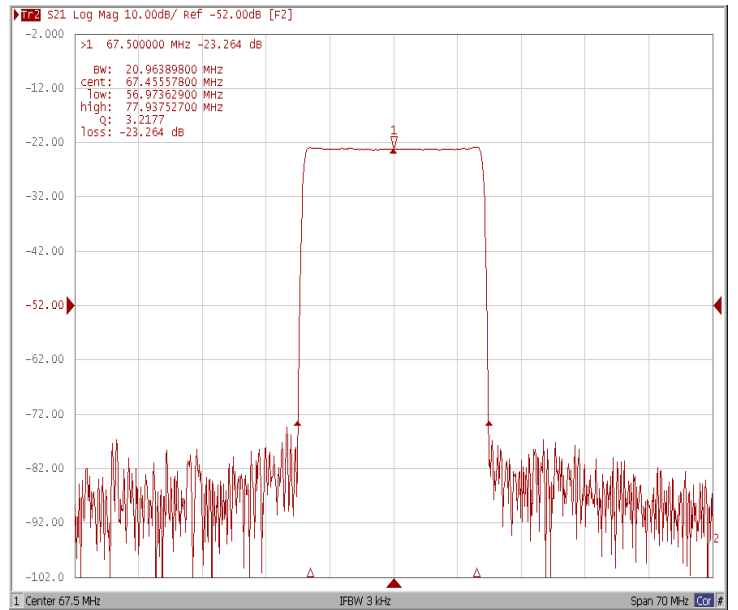
Bandwidth at -3.0 dB



Bandwidth at -40.0 dB



Bandwidth at -50.0 dB

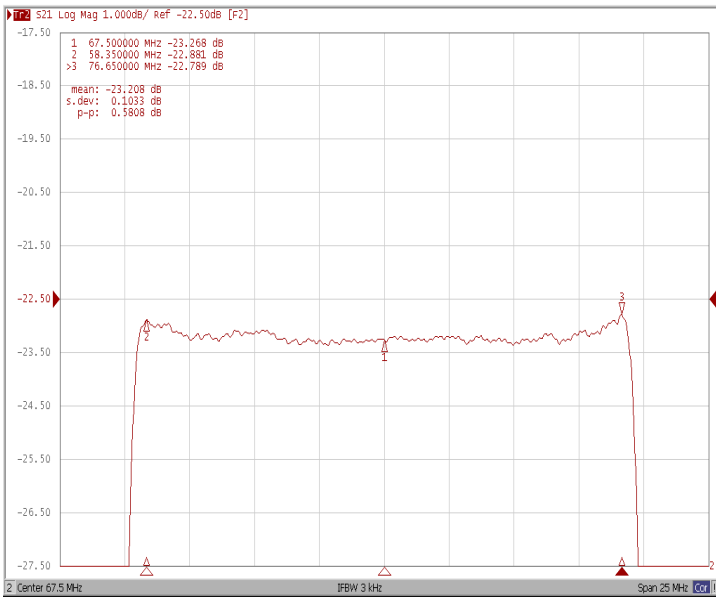




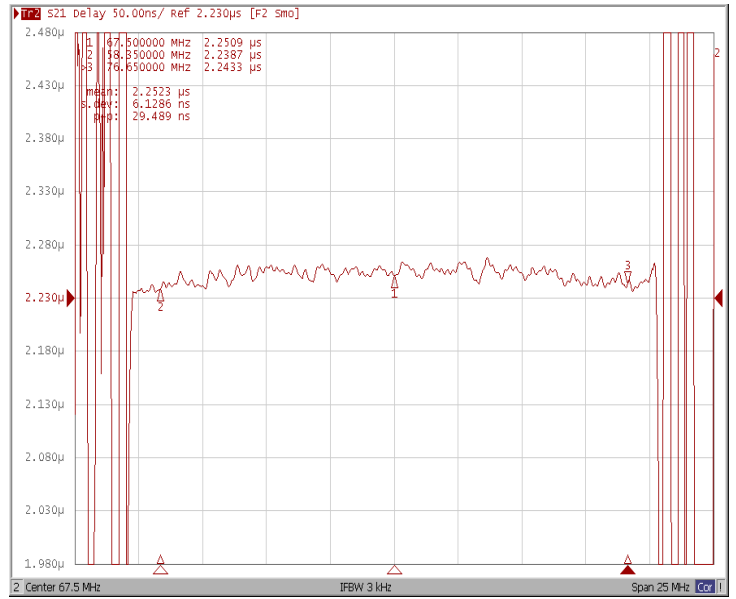
Frequency Characteristics

Frequency Response

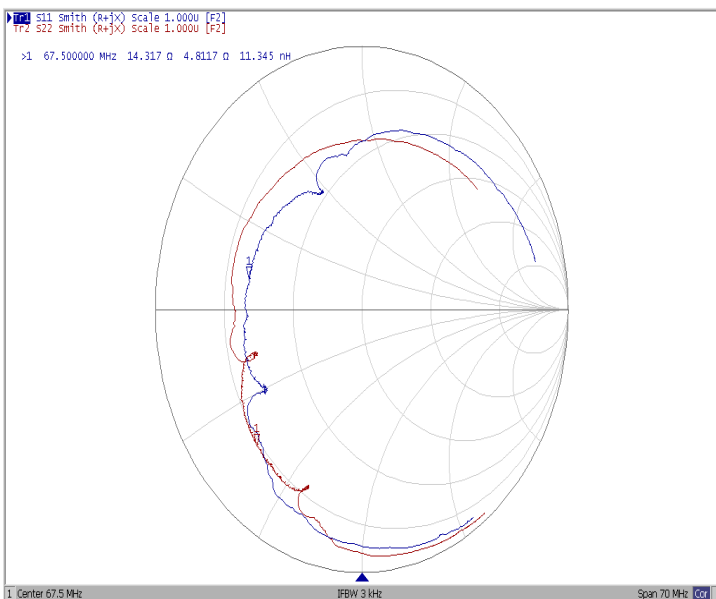
Ripple Variation at Fo±9.15 MHz



Group Delay Variation at Fo±9.15 MHz



Smith Chart



VSWR

